

Colorectal Cancer Mortality Disparities Learning Community

Colorectal Cancer in Your Community

The American Cancer Society has provided training & technical assistance to grantees of the **Centers for Disease Control and Prevention's National Comprehensive Cancer Control Program** for over 25 years.

We acknowledge and thank CDC for its support of ACS staff, and in the development and dissemination of this learning session, under cooperative agreement NU58DP007540 awarded to the American Cancer Society. Its contents are solely the responsibility of the authors and do not necessarily represent the official views of CDC.



August 7, 2025

Today's Session – What to Expect

- 1 Welcome & Warm-up & Polls
- 2 Presentation
- 3 Q&A
- 4 One Breakout and One Large Group Activity
- 5 Resources & Call to Action

Our Roadmap

The ACS CCC team is hosting this CRC Mortality Learning Community to increase NCCCP recipients' and cancer coalitions' capacity to integrate interventions mitigating CRC mortality disparities into the state planning process.

1

CRC Mortality 101

May 1, 2025

3

CRC Survivorship

July 10

5

**CRC Mortality and
State Cancer
Plans**

September 4, 2025

2

**Timely Follow-Up Colonoscopy
and CRC Mortality**

June 5, 2025

4

**CRC Mortality in Your
Communities**

August 7, 2025

**Focus on gaining foundational knowledge
on the latest in CRC mortality disparities**

**Focus on applying what
we've learned to our work**

Learning Objectives

1. Increase integration of interventions mitigating colorectal cancer (CRC) mortality disparities into the state comprehensive cancer coalition planning processes

2. Increase knowledge of tools coalitions can use to assess the burden to apply and adapt evidence-based interventions

3. Practice use of tools related to CRC mortality rates using specific communities' characteristics

.....and NETWORK with colleagues from around the country!

**Our speaker today has no
conflicts of interest to disclose
related to this presentation**

Disclosures



Char Raunio

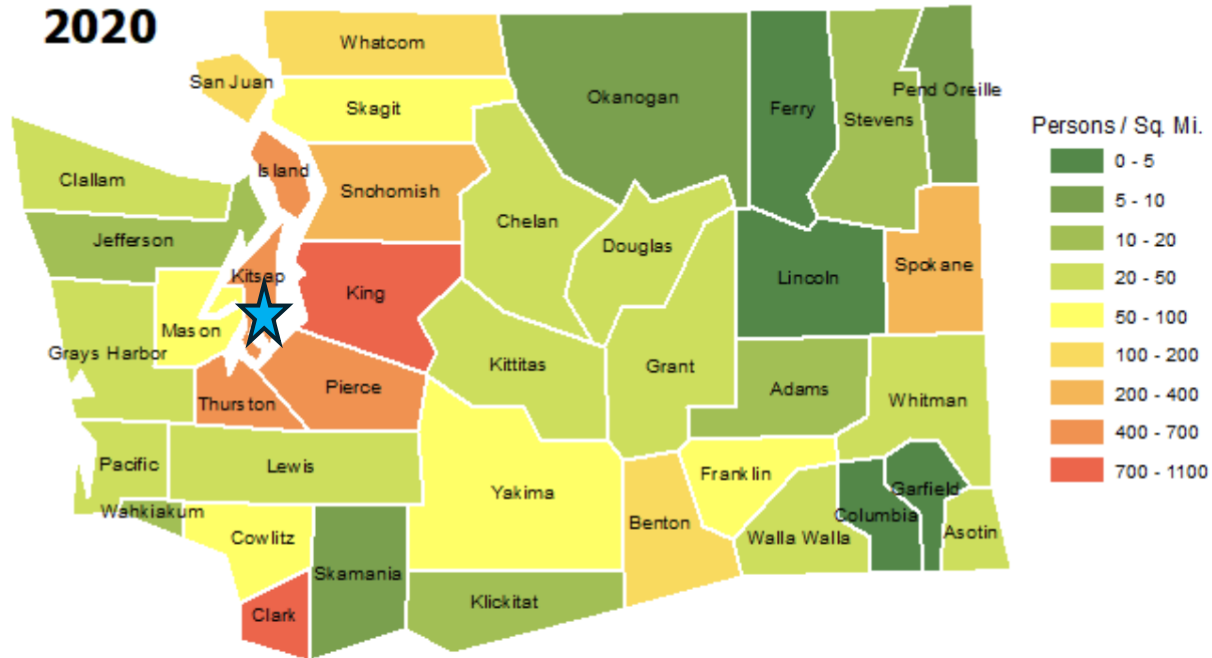
Associate Director, State
Partnerships American Cancer
Society, Washington and Oregon



Guest Speaker

View of Washington State

Population density by county



7.7 million people

White (64%), Hispanic (14%), Asian (9%),
Black (4%), AI/AN (1.6%)

29 federally recognized tribes


21% rural

15.5% foreign born

Mexico, India, China, Philippines, Vietnam

21.5% language other than English

Spanish (9%), Asian/PI (7%)



Utilizing the National Colorectal Cancer Data Dashboard

Three examples of uses:

- Presentation at the NW Colorectal Cancer Task Force Meeting highlighting CRC Screening & Outreach in Rural Washington
- Oregon Health Science University (OHSU), Knight Cancer Institute Community Outreach & Engagement in communities
- Colon at the State Capitol event with Legislators

May 2025 NW Colorectal Cancer Task Force Meeting

Presentation by Stephanie Hansen, DO, MBA, Internal Medicine, Yakima Farm Workers Clinic
CRC Screening and Outreach in Rural Washington

Dr. Hansen utilized the Data Dashboard to review CRC rates in their catchment area, providing a data-informed foundation for the discussion on screening and outreach efforts in rural communities.

Colorectal Cancer Stats



Yakima County

- Mortality Rate 14.2%
- Incidence 32.8%
- Screening 51.4%

Yakima County Farm Workers Clinic

- Screening (2024) 59.9%
- Screening (YTD) 42.8%

Self

- Screening (YTD) 58%

<https://nccrt.org/colorectal-cancer-data-dashboard/>

OHSU/Knight Cancer Institute Outreach

The Knight Cancer Institute's Mobile Outreach Van collaborates with communities throughout Oregon to deliver cancer education, early detection services, and access to treatment resources.

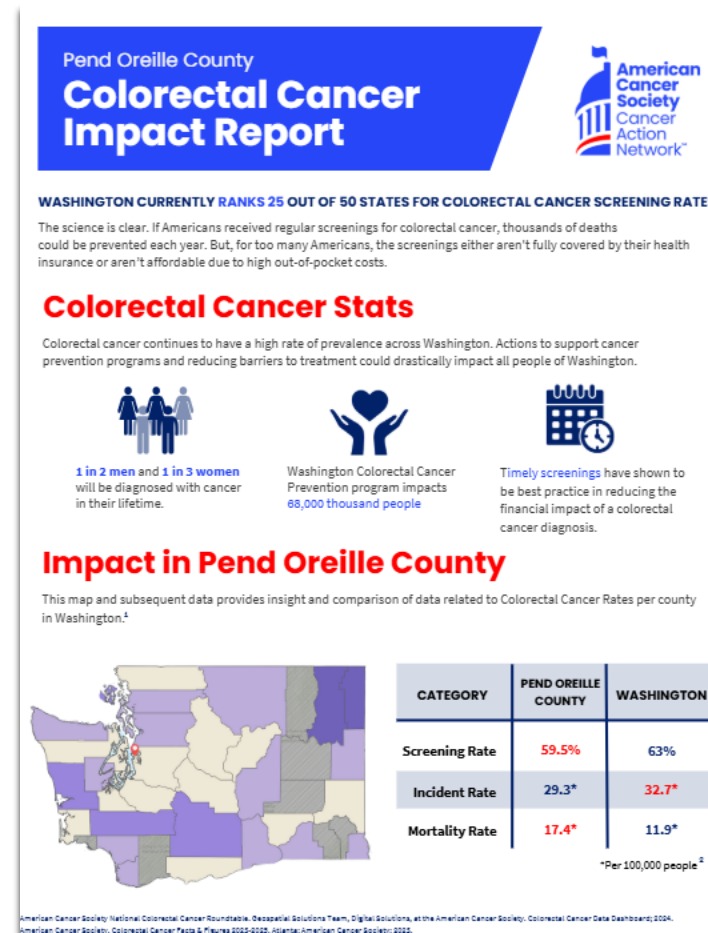
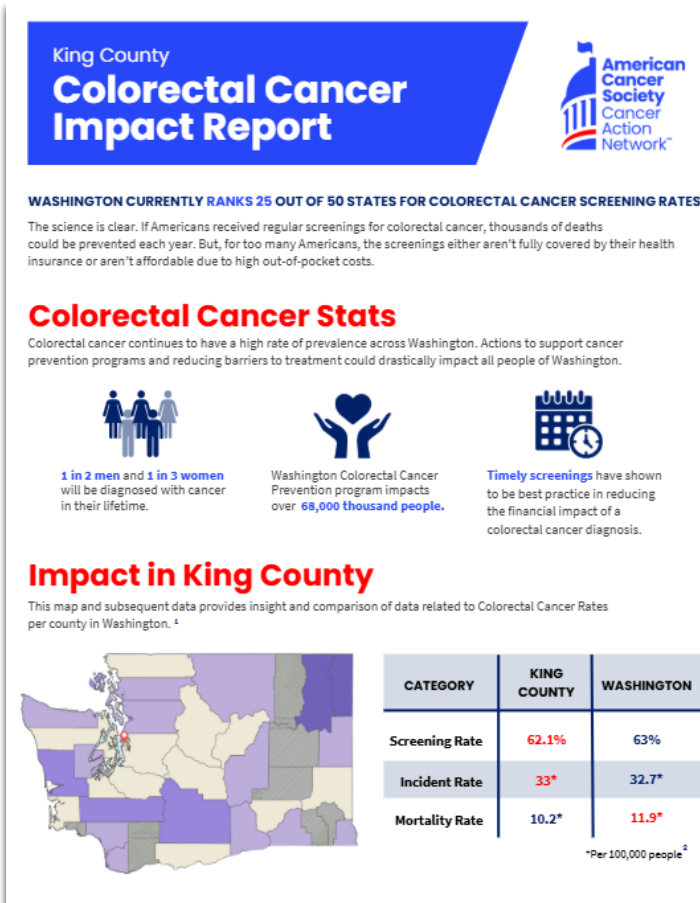
Derrick Zebroski, presenting Community Outreach & Engagement at OHSU, Knight Cancer Institute & serves as a member of the NW Colorectal Cancer Task Force Leadership, utilizes the Data Dashboard to access CRC rates in the communities where events are held. The data supports informed discussion around CRC screening and prevention.



WA ACS Cancer Action Network & ACS Patient Support Colon at the Event Capitol Event

WA ACS CAN & ACS Patient Support collaborated to develop county-specific information sheets utilizing data from the Data Dashboard.

During the Capitol event in March, legislators who toured the Colon exhibit received district-specific information sheets. These materials highlighted colorectal cancer incidence and mortality rates within their respective districts, underscoring the critical importance of CRC screening.





CRC Data Dashboard



The **CRC Data Dashboard** is a dynamic national platform that integrates layers from multiple sources and allows you to interactively explore data using maps and graphs, including:

- CRC surveillance data (incidence rates, mortality rates)
- CRC screening rates
- Healthcare settings (Commission of Cancer hospitals, Federally Qualified Health Centers, National Cancer Institute Designated Cancer Centers)
- Demographics (age, race and Hispanic origin, gender identity and sexual orientation, poverty status, educational attainment)
- Additional health measures (smoking, binge drinking, obesity)

An Overview

CRC Data Dashboard Tutorial



Interactive Dashboard Practice



Using the CRC Data Dashboard, we are going to try to answer a few questions together:

- What does the CRC incidence and mortality rates look like in... [State]?
 - What health systems and clinics are available to those living in the county with the highest CRC incidence in the state?
 - What about with the highest mortality?
 - What does screening look like in that county?
- Special populations or characteristics of populations:
 - What percentage of the population in [state] is LGBTQIAA+?
 - What percentage of the population in [state] is living in poverty?
 - How many people in [state] are eligible for screening?

Follow Along & Learn

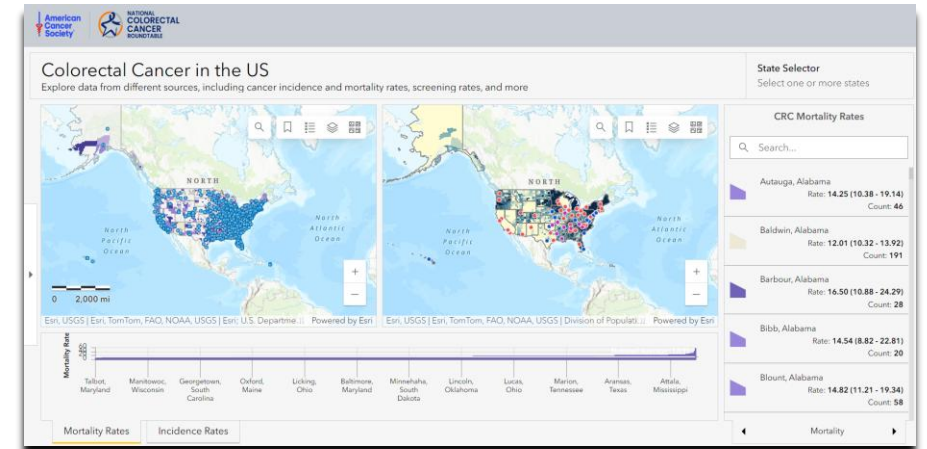
Visit the CRC Data Dashboard

- Assess the burden of CRC incidence and mortality in your state by county
- Assess CRC screening rates in your state by county

Call To Action

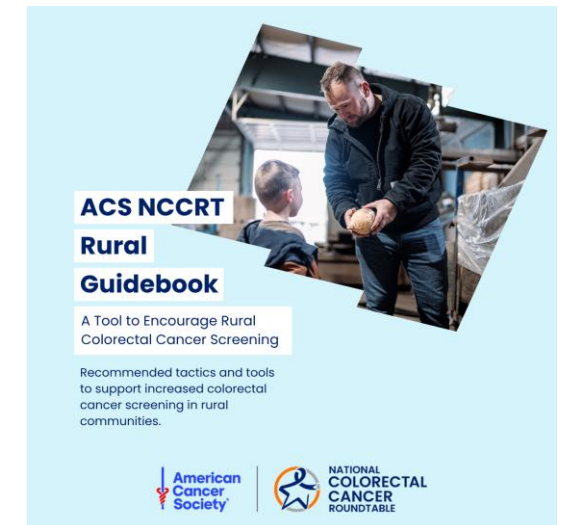
CRC Data Resources

[CRC Data Dashboard](#)



[Increasing CRC Screening in Rural Communities: A Practical Guide](#)

[ACS CCC Cancer Data Resources](#)

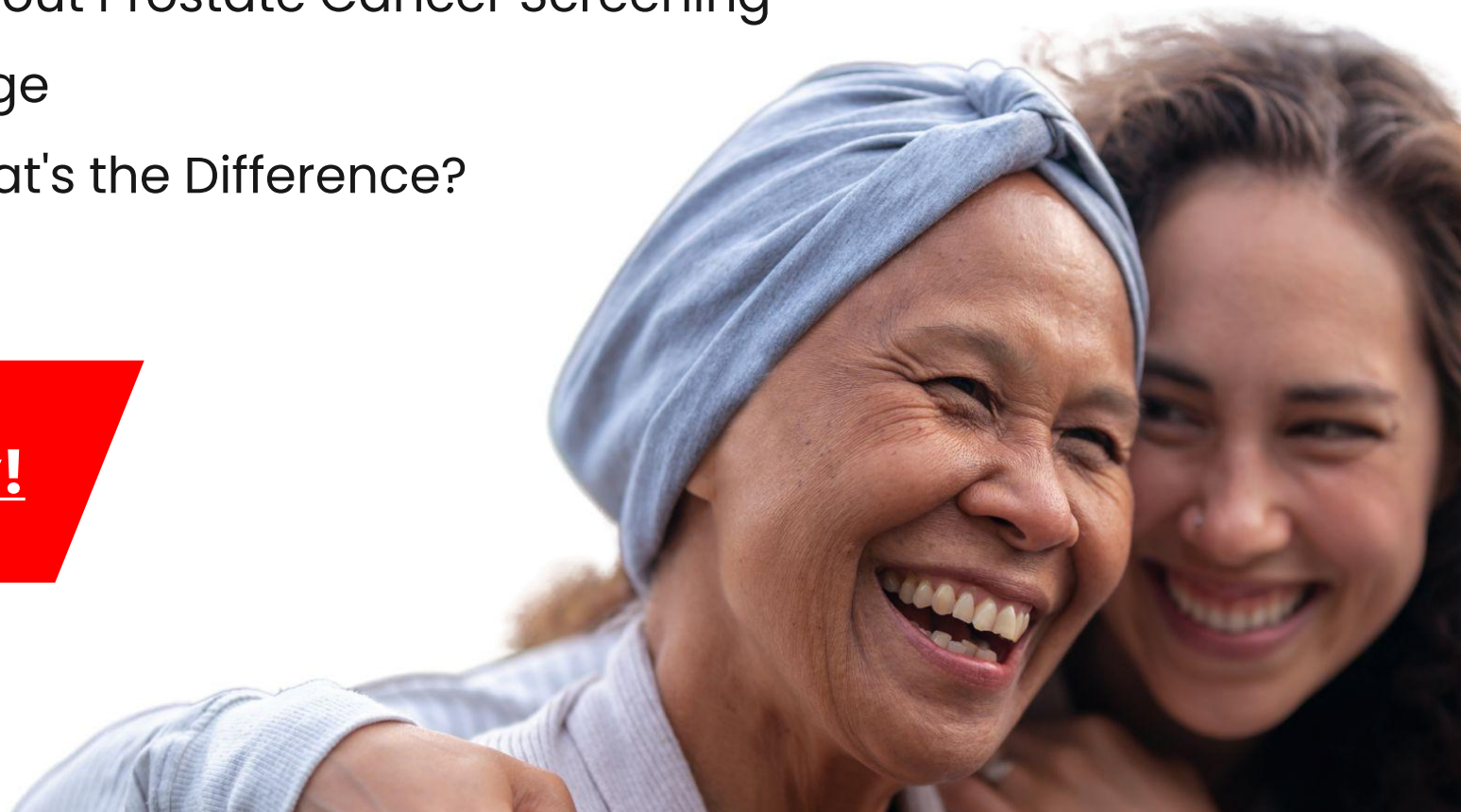


ACS Webinar for Cancer Coalitions Series

2025 Webinar Topics:

1. CCC Coalitions & the Evolving Landscape of Cancer Survivorship
2. Fueling the Mission: ACS Resources to Power Your Coalition's Work
3. What You Need to Know About Prostate Cancer Screening
4. Cancer and Climate Change
5. Advocacy vs Lobbying: What's the Difference?

Watch the Recordings Today!



Check out resources from ACS CCC!

acs4ccc.org

Your one-stop shop for coalition resources across ACS

Monthly E-Newsletter



ACS Coalition University

Brief, [on-demand trainings](#) for CCC coalition staff & leadership on topics such as.....



Thank you from your ACS CCC Team!



Sarah Shafir
Principal Investigator



Donoria Evans
Director, Data & Evaluation



Disa Patel
Senior Data and
Evaluation Manager



Liddy Hora
Program Manager



Aubree Thelen
Program Manager

acs4ccc.org